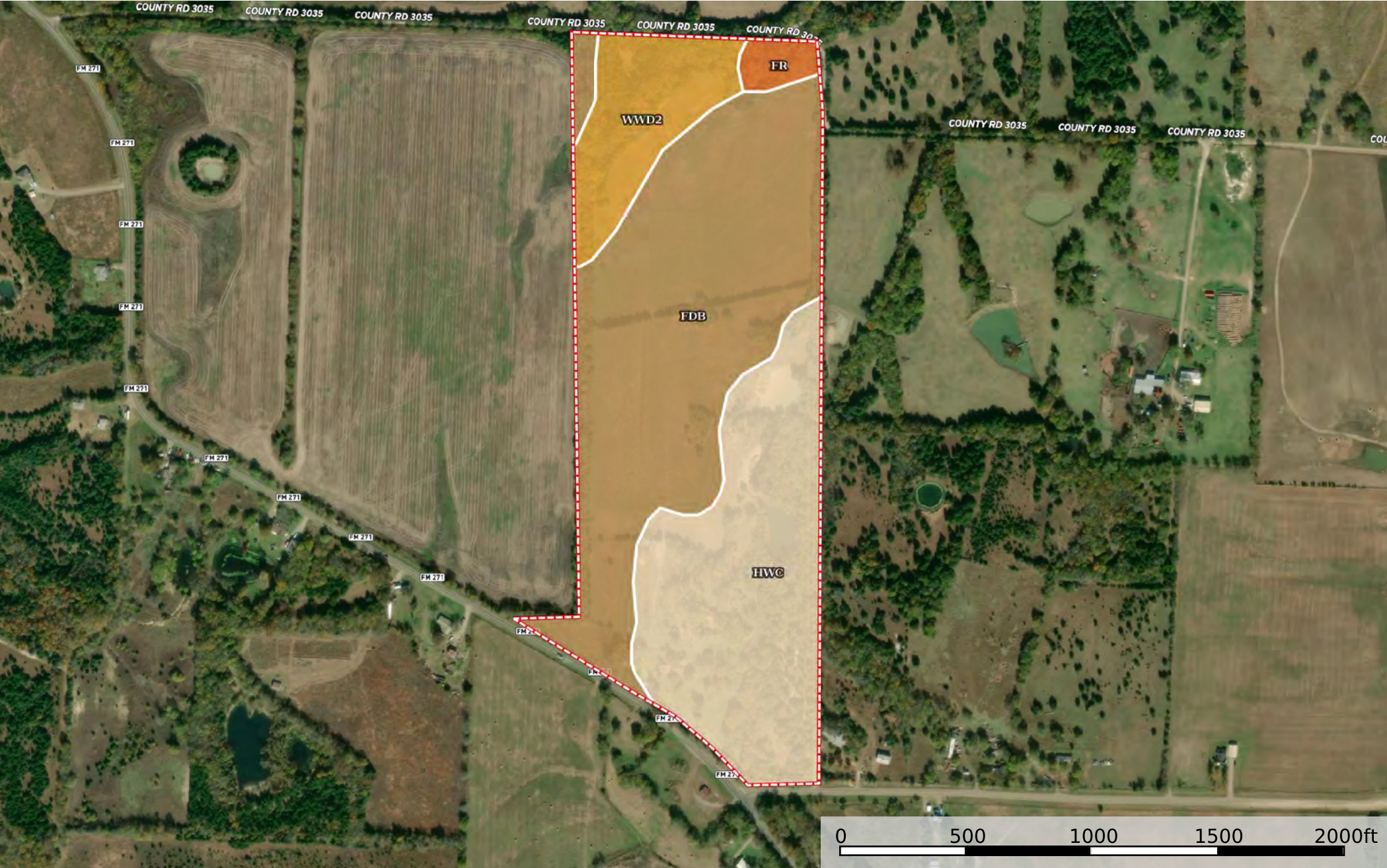


Texas, AC +/-



 Boundary

| Boundary 62.24 ac

| SOIL CODE | SOIL DESCRIPTION | ACRES | % | CPI | NCCPI | CAP |
|-----------|--|----------|-------|-----|-------|------|
| FdB | Fairlie-Dalco complex, 1 to 3 percent slopes | 31.47 | 50.55 | 0 | 41 | 2e |
| HwC | Howe-Whitewright complex, 3 to 5 percent slopes | 21.92 | 35.21 | 0 | 27 | 3e |
| WwD2 | Whitewright-Howe complex, 5 to 12 percent slopes, eroded | 7.57 | 12.16 | 0 | 20 | 6e |
| Fr | Frioton silty clay loam, occasionally flooded | 1.28 | 2.06 | 0 | 67 | 2w |
| TOTALS | | 62.25(*) | 100% | - | 34.04 | 2.84 |









(*) Total acres may differ in the second decimal compared to the sum of each acreage soil. This is due to a round error because we only show the acres of each soil with two decimal.

Capability Legend

Increased Limitations and Hazards

Decreased Adaptability and Freedom of Choice Users

Land, Capability

| |  |  |  |  |  |  |  |  |
|--------------|---|---|---|---|--|---|---|---|
| | 1 | 2 | 3 | 4 | 5 | 6 | 7 | 8 |
| 'Wild Life' | • | • | • | • | • | • | • | • |
| Forestry | • | • | • | • | • | • | • | |
| Limited | • | • | • | • | • | • | • | |
| Moderate | • | • | • | • | • | • | | |
| Intense | • | • | • | • | • | | | |
| Limited | • | • | • | • | | | | |
| Moderate | • | • | • | | | | | |
| Intense | • | • | | | | | | |
| Very Intense | • | | | | | | | |

Grazing Cultivation

(c) climatic limitations (e) susceptibility to erosion

(s) soil limitations within the rooting zone (w) excess of water